



**21 Sloane Street MARRICKVILLE NSW**



**IDEAL FOR COLD STORAGE, DISTRIBUTION AND FOOD PROCESSING**

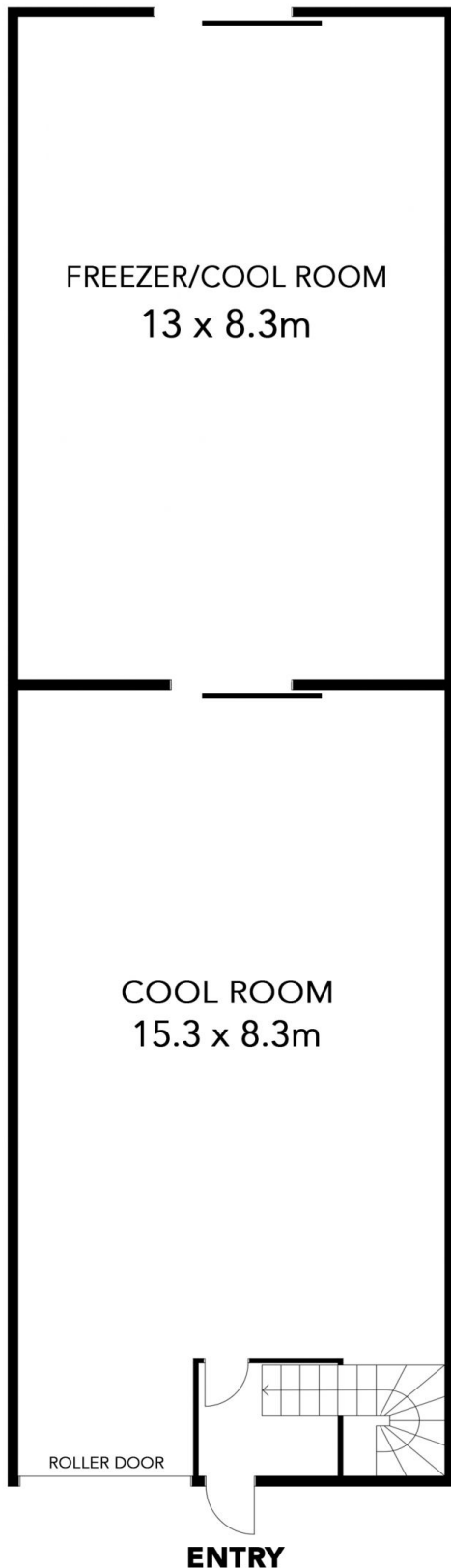
**Building Size** : 430 sqm  
**View** : <https://www.swpre.com.au/7900497>

Factory Area: 235sqm  
Office Area: 128sqm  
Total Area: 363sqm

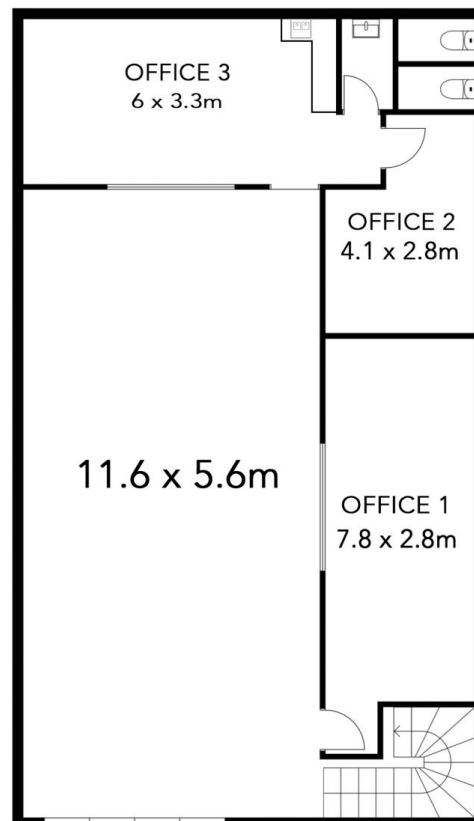


**Aris Giotas**  
**0452 405 682**

# 21 SLOANE STREET, MARRICKVILLE



FACTORY AREA - 235 sqm  
OFFICE AREA - 128 sqm  
TOTAL AREA - 363 sqm



Plans shown are for presentation purposes only and are not part of any legal document or title. They are subject to errors, omissions and inaccuracies. They should not be used as a sole and accurate reference. Interested parties should make their own inquiries using independent sources.