



426 Gumnut Crescent Bungonia NSW

2 1 2

426 Gumnut Crescent, Bungonia offers a serene 40.5 hectare approx property, perfect for those seeking space and privacy in a natural setting. This expansive land provides a mix of cleared areas and native bush. The property features a 2 bedroom residence, scenic views, three dams, ample space for outdoor activities, and is conveniently located with easy access to local amenities. It presents a rare opportunity to own a substantial piece of land in the peaceful Bungonia region, ideal for anyone looking for a rural escape.

Property features:

- Two bedroom residence
- Solar panels for efficient energy
- Open shed or double car garage

Type : Rural
Price : Price guide: \$890,000
Land Size : 40.5 ha
View : <https://www.swpre.com.au/8202861>



Aris Giotas
0452 405 682

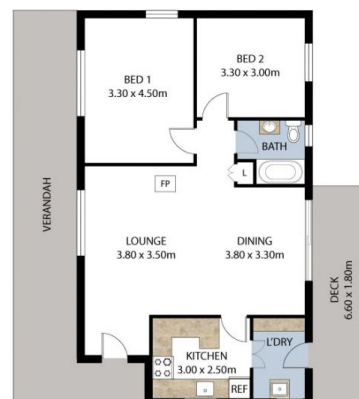


David Glucksman
0452 405 682

[For full version visit the website](https://www.swpre.com.au)



SITE PLAN



FLOOR PLAN

This floor plan including furniture, fixture measurements and dimensions are approximate and for illustrative purposes only.
All enquiries must be directed to the agent, vendor or party representing this floor plan.

426 Gumnut Crescent