



23-27 Smith Street Marrickville NSW

Located in a thriving industrial hub, 23-27 Smith Street, Marrickville offers a spacious and flexible commercial space suited for a variety of creative and business uses. The premises features a generous 22 metre frontage and a configuration that easily allows for multiple tenancies, or subdivisions in the future.

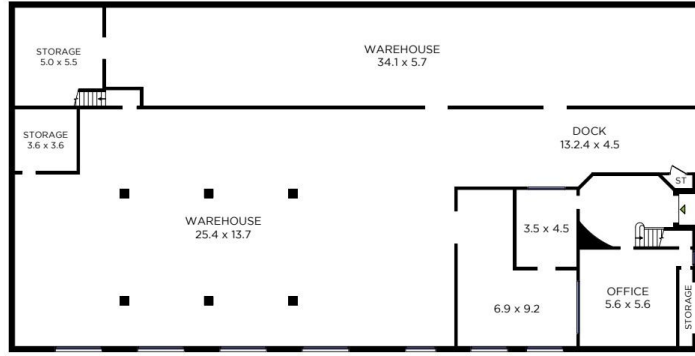
The property is currently leased to French Fripe, a high quality tenant that belongs to the largest network of second hand clothing wholesalers in the world. Popular neighbours include the Double Tap Coffee & ONA Café, the Factory Theatre, Vic on the Park Hotel, and Gelato Messina in addition to a selection of restaurants, breweries and specialist retailers.

Type	: Industrial
Price	: Contact for details
Building Size	: 1304 sqm
View	: https://www.swpre.com.au/8261621



Aris Giotas
0452 405 682

[For full version visit the website](https://www.swpre.com.au)



23-27 Smith Street, Marrickville

highland
COMMERCIAL PROPERTY

Raine & Horne
Commercial

SWP

BUILDING AREA: 1,304m² approx.

Sydney Wide Property

This diagram is for illustrative purpose only. All reasonable care has been taken in the preparation, but no warranty is given as to the accuracy of the information. This document does not constitute any part of any offer or contract. Dimensions shown are approximate only. Prospective purchasers must rely on their own enquiries.