



## 18 Fitzroy Street Marrickville NSW

Sydney Wide Property is proud to present a rare opportunity to lease a well-positioned industrial building. Centrally located in the hub of the Marrickville industrial precinct. Just moments from popular cafes, entertainment hubs, Sydenham Metro & Train Station, and the Metro Shopping Centre.

### Property Features:

- 285m<sup>2</sup> approx of building area
- 240m<sup>2</sup> approx of land area
- Rear lane access
- Amenities on both levels
- 3-phase power
- Flexible layout to suit a range of business or creative uses

[For full version visit the website](https://www.swpre.com.au)

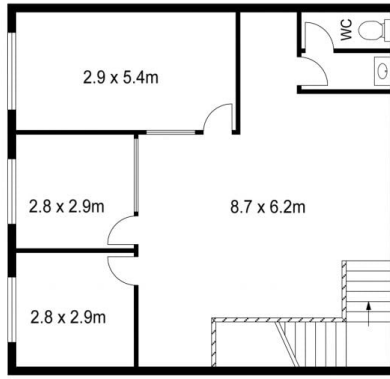
**Type** : Industrial  
**Price** : Contact Agent  
**Building Size** : 285 sqm  
**Land Size** : 240 sqm  
**View** : <https://www.swpre.com.au/8633271>



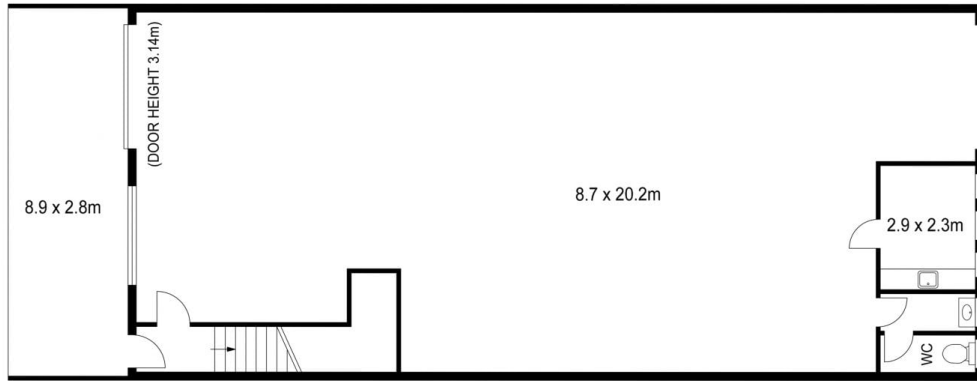
**Aris Giotas**  
02 9560 5444



**Arthur Kollias**  
0412 007 711



FIRST FLOOR



GROUND FLOOR

# 18 Fitzroy Street, Marrickville

BUILDING AREA: 283m<sup>2</sup> approx.



This diagram is for illustrative purpose only. All reasonable care has been taken in the preparation, but accuracy is not guaranteed. This document does not constitute any part of any offer or contract. Dimensions shown are approximate only. Prospective purchasers must rely on their own enquiries.